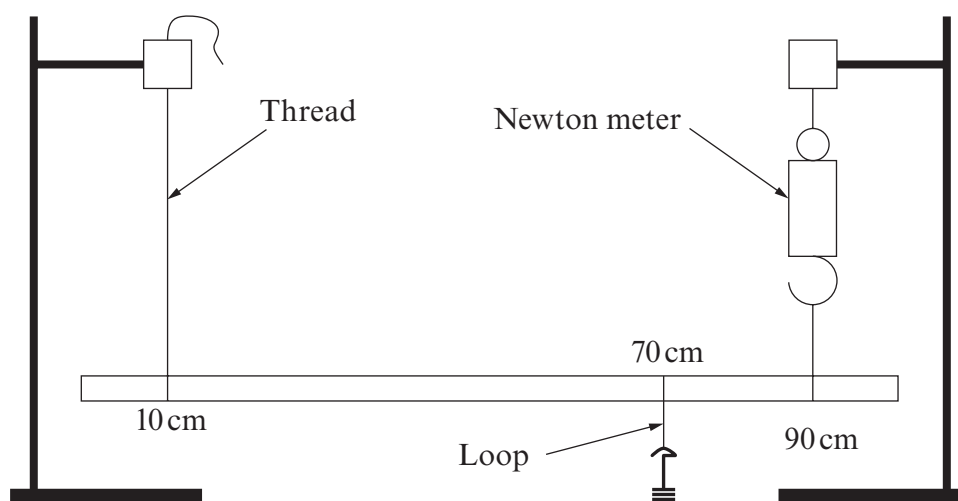


**Task A2 (15 minutes)**

You are going to use the apparatus set-up as shown below, and the principle of moments to determine the weight of the metre ruler.



- (a) **Draw** an arrow, labelled **W**, on the diagram to represent the weight of the ruler acting through the centre of gravity. [1]
- (b) Attach the 4.0 N weight to the loop and move it to the 70 cm mark on the ruler. Adjust the length of the thread until the ruler is horizontal. Write down the reading of the Newton meter. **Repeat readings are not needed.** [1]

.....

.....

- (c) By taking moments about the 10 cm point, determine a value for the weight of the ruler. [3]

.....

.....

.....

.....

.....